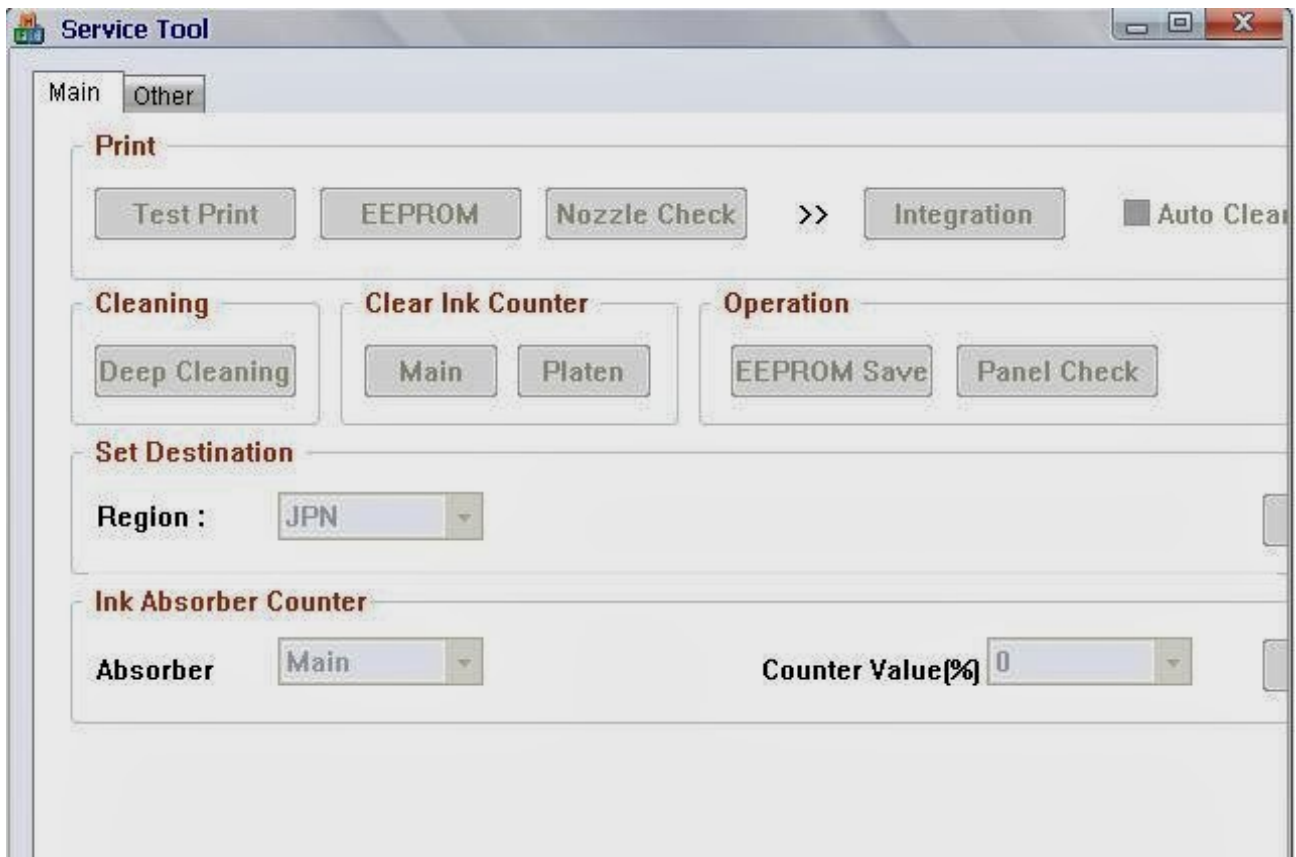


---

## Service Tool V3400 Download



DOWNLOAD: <https://byltly.com/2iknpj>



---

Specifications External links User manual References Category:Canon products Category:Office equipment Category:Point-and-shoot cameras Category:Digital cameras Category:Products introduced in 2006

Louis III, Count of Louvain Louis III, Count of Louvain (died 1420) was the second Count of Louvain, son of Louis II, Count of Louvain and his first wife Hedwig of Alsace. He married firstly Jutta of Saxony in 1376. He was a benefactor of Lokeren, where he built the "stegge" which gave the town its name. He was a son-in-law of King John of Luxembourg, and the brother-in-law of Charles II of Luxembourg, King of Bohemia. Louis III and Jutta had four children: Louis IV, Count of Luxembourg Margaret Hedwig Barbara Sources Category:14th-century births Category:1420 deaths Category:Counts of Luxembourg Category:House of Luxembourg Category:14th-century people of the Holy Roman Empire

$R$ -basis of  $M$ ; that is, there exists a surjective map  $\sigma : M \rightarrow A$  such that  $\sigma(x) \cdot \sigma(y) = \sigma(x \cdot y)$  for all  $x, y \in M$ ,  $\sigma(1) = 1$ , and  $M \simeq A \oplus A^{\sigma}$ , where  $A^{\sigma}$  is the subspace  $\{x^{\sigma} \mid x \in A\}$  of  $A$ . As  $1 \in A$  is primitive,  $A^{\sigma} \cap A^{\sigma^2} = 0$  and hence  $M = A \oplus A^{\sigma} \simeq A \oplus A^{\sigma} \oplus A^{\sigma} \oplus A^{\sigma} = A \oplus A \oplus A^{\sigma} \oplus A^{\sigma} = A \oplus A \oplus A^{\sigma} \oplus A^{\sigma} = A \oplus A \oplus A^{\sigma} \oplus A^{\sigma}$

[Download Microsoft Visual Basic Powerpacks Vs Version 10000  
librohistoriadominicanafilibertocruzsanchezpdf20  
ktd 400 kantatu digital vol 1 rapidshare](#)